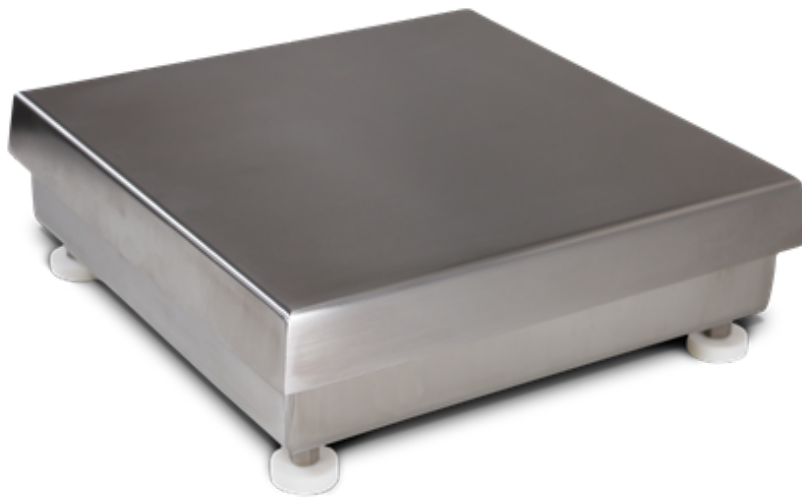


CW-90B Light-capacity Bench Scale



A partir de: sábado, mayo 9,
2026



Características estándar

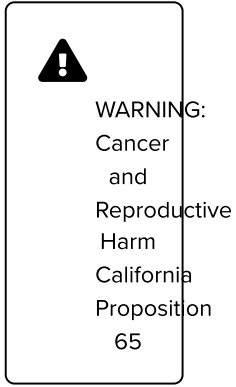
- NTEP Certified load cell
- 304 stainless steel construction
- Meets HACCP requirements
- Five-point overload protection
- Specially designed adjustable support feet provide exceptional traction and will not scratch surfaces

Homologaciones



Measurement
Canada
Approved





Durable, General Purpose Bench Scale

The CW-90B is a light-capacity industrial bench scale base designed to endure tough environments with a full 304 stainless steel construction and aluminum environmentally sealed load cell. Available in a range of low- to mid-size dimensions and capacities up to 100 pounds, Rice Lake has the appropriate size for your application.

CW-90B Bench Scale Specifications

Load Cell:

IP67, environmentally sealed
Aluminum

Scale Frame:

AISI304L, straight line finish,
Ra=45 ± 10

Temperature:

Compensated: 14 °F to 104 °F (-10
°C to 40 °C)

Output Impedance:

350 ohm

Scale Cover:

AISI304L, straight line finish,
Ra=45 ± 10

Warranty:

Two-year limited

Maximum Overload:

180% to 200% depending on
capacity

Cable Length:

34 in (86 cm) or 10 ft (3 m)

Approvals:

NTEP 95-072, Class III 5,000 d
Measurement Canada AM-5082
NSF

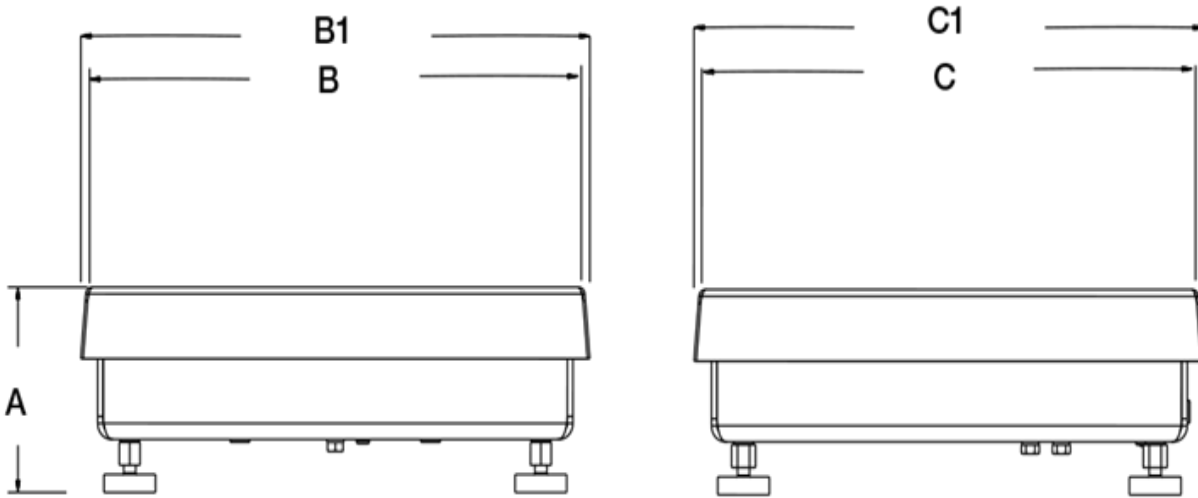
Overload Protection:

Five-point, independently
adjusted

Load cell is NTEP

Load cell is cFMus Approved

CW-90B Bench Scale Dimensions



10 × 10 in			
H	4.25 in	W	10.00 in
L	10.00 in	W1	10.25 in
L1	10.25 in		
12 × 12 in			
H	4.25 in	W	12.00 in
L	12.00 in	W1	12.25 in
L1	12.25 in		
<i>Note: 1 in = 25.4 mm</i>			

Códigos de productos

Código	Descripción
--------	-------------

Cable length: 10 ft

112599	Bench Scale ASSY,5lb CW90 10x10 (Load Cell Cable Length Is 10ft)
112601	Bench Scale ASSY,10lb CW90 10x10 (Load Cell Cable Length Is 10ft)
112603	Bench Scale ASSY,25lb CW90 10x10 (Load Cell Cable Length Is 10ft)
112605	Bench Scale ASSY,25lb CW90 12x12 (Load Cell Cable Length Is 10ft)
112607	Bench Scale ASSY,50lb CW90 12x12 (Load Cell Cable Length Is 10ft)
112609	Bench Scale ASSY,100lb CW90 12x12 (Load Cell Cable Length Is 10ft)

Cable length: 34 in

106137	Bench Scale ASSY,5lb CW90 10x10 (LOAD CELL CABLE LENGTH IS 34 IN.)
106138	Bench Scale ASSY,10lb CW90 10x10 (LOAD CELL CABLE LENGTH IS 34 IN.)
106139	Bench Scale ASSY,25lb CW90 10x10 (LOAD CELL CABLE LENGTH IS 34 IN.)
106140	Bench Scale ASSY,25lb CW90 12X12 (LOAD CELL CABLE LENGTH IS 34 IN.)
106141	Bench Scale ASSY,50lb CW90 12X12 (LOAD CELL CABLE LENGTH IS 34 IN.)
106142	Bench Scale ASSY,100lb CW90 12X12 (Load Cell Cable Length Is 34 In.)

Opciones

Código	Descripción
112044	Column,12 Inch SST Kit OPT Benchmark, Benchmark (SL/HE/HE-X), CW-80B, CW-90B, CW-90XB to IQ+210, CW-90I, CW-90XI, 480/482, 680/682, 380/380X
112045	Column,18 Inch SST Kit OPT Benchmark, Benchmark (SL/HE/HE-X), CW-80B, CW-90B, CW-90XB to IQ+210, CW-90I, CW-90XI,480/482, 680/682, 380/380X
196363	Column,12 Inch SST Kit OPT Benchmark, Benchmark (SL/HE), CW-80B, CW-90B, CW-90XB to 882IS/882IS PLUS with battery
196364	Column,18 Inch SST Kit OPT Benchmark, Benchmark (SL/HE), CW-80B, CW-90B, CW-90XB to 882IS/882IS PLUS with battery
197482	Column,12 Inch SST Kit OPT Benchmark, Benchmark (SL/HE), CW-80B, CW-90B, CW-90XB to 882IS/882IS PLUS with power supply option (power supply will not be mounted to the column), 880/880 Plus Universal
197484	Column,18 Inch SST Kit OPT Benchmark, Benchmark (SL/HE), CW-80B, CW-90B, CW-90XB to 882IS/882IS PLUS with power supply (power supply will not be mounted to the column), 880/880 Plus Universal
64576	Bracket,Attachment Kit OPT, Benchmark for IQ+210, 480/482, 680/682, 380/380X
NA	Ball transfer and roller conveyor top

Repuestos

Código	Descripción
200153	LIT,Manual CW-90B CW-90XB CW-90B and CW-90XB Light-Capacity Bench Scales Technical Manual
107144	Cover,10x10 CW90 Bench Scale
105457	Cover,12x12 CW90 Bench Scale
105450	Spider Plate,12x12 CW90 Bench Scale
105555	Nut,CPLG 1/4-20NC x .400 3/8 Hex With .265 Counterbore SST
106462	Screw,Cap 1/4-20NC x 1-1/2 Hex Head 18-8 SST
32860	Load Cell,SPT RL1040-N5- 7kg 7kg 10ft 2mV/V 350 OHM NTEP III 5 S AL Potted FM IP67
32861	Load Cell,SPT RL1040-N5- 10kg 10kg 10ft 2mV/V 350 OHM NTEP III 5 S AI Potted FM IP67
32864	Load Cell,SPT RL1040-N5- 30kg 30kg 10ft 2mV/V 350 OHM NTEP III 5 S AI Potted FM IP67
188679	Load Cell, SPT RL42018A 50kg 10ft 2mv/v 350 Ohm NTEP III 5S AI FM IP66
188681	Load Cell, SPT RL42018A 100kg 10ft 2mv/v 350 Ohm NTEP III 5S AI FM IP66
107142	Base Plate,10x10 CW90 Bench Scale
105452	Base Plate,12x12 CW90 Bench Scale
45329	Screw,Machine 8-32NCx1/4 Phillips Pan Head 18-8 SST With Nylon Patch on Thread
52342	Label,4.00x1.25 8000T VOID Matte (Formerly Polytrans 3000 Void) 3" Core STOCKED PER EACH.
107476	Foot,Benchmark 1/4-20NCx 1-1/2 SST USDA/NSF Approved CW90/CW90X
52383	Shim,Load Cell .25 x 1 x 1.34 SST
15148	Washer,Lock 1/4 Regular Helical Spring SST ID=.254-.262 OD=.489max Thickness=.062
14963	Screw,Cap 1/4-20NCx3/4 HEX Head Fully Threaded ASTM F593 Alloy Group 1 Cold Worked SST
15410	Level,Spirit Bubble Plastic 15mm Press Fit
21948	Screw,Cap 1/4-20NCx5/8 Fully Threaded HEX Head SST
35082	Shim,Load Cell .125x1x1.34 SST
163794	Screw,Cap 1/4-28NF x 1/2 Flat Head Socket 18-8 SST
14960	Screw,Cap 1/4-20NC x 1/2 Hex Socket Flat Countersunk Head 18-8 SST

Cable length: 34 in

107756	Load Cell,SPT RL1040-7KG 2.83ft 2mv/v 350 OHM NTEP III 5 S AL Potted FM CE Cable Stripped And Tinned
--------	--

Código	Descripción
107757	Load Cell,SPT RL1040-10kg 2.83ft 2mv/v 350 OHM NTEP III 5 S AL Potted FM CE Cable Stripped And Tinned
107758	Load Cell,SPT RL1040-30KG 2.83ft 2mv/v 350 OHM NTEP III 5 S AL Potted FM CE Cable Stripped And Tinned
107759	Load Cell,SPT RL1040-50KG 2.83ft 2mv/v 350 OHM NTEP III 5 S AL Potted FM CE Cable Stripped And Tinned
107760	Load Cell,SPT RL1040- 100KG 2.83ft 2mv/v 350 OHM NTEP III 5 S AL Potted FM CE Cable Stripped And Tinned

www.ricelake.com | 800-472-6703

An ISO 9001 Registered Company ©2024 Rice Lake Weighing Systems